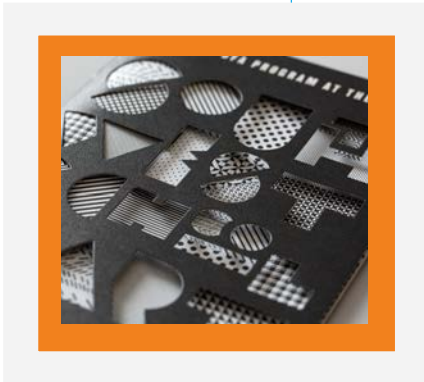




Die Cutting Catalog

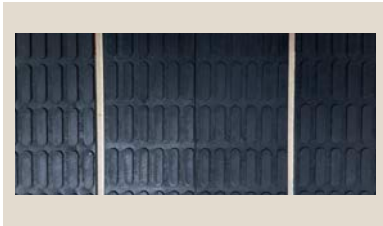
Our state-of-the-art manufacturing facility has extensive capabilities in precision die cutting and vacuum forming. Whether you require short prototype runs or high-volume production, we have the technical knowledge to deliver intricate, clean-cut patterns and shapes that meet your specifications.



We can also create custom shaped & sized dies for your application using your drawings or dimensions

www.cpitx.com

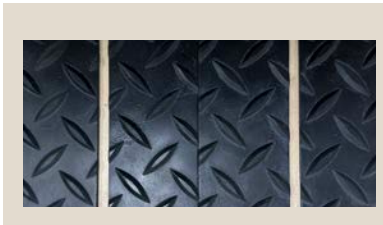
Die Cutting Materials



Name: Firm Capsule
Material: SBR Rubber 1/8" thick
Minimum order: \$50 USD



Name: Flat Black Foam
Material: Foam 1/8" thick
Minimum order: \$50 USD
Also comes in 1/4" & 1/2" Thickness



Name: Diamond Plate
Material: SBR Rubber 1/8" thick
Minimum order: \$50 USD



Name: Firm Screen
Material: SBR Rubber 1/8" thick
Minimum order: \$50 USD

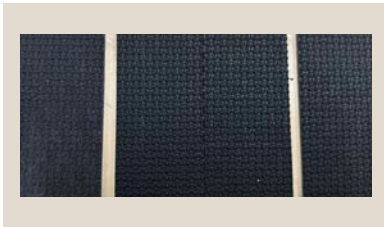
Die Cutting Materials



Name: Firm Xtrax
Material: SBR Rubber 1/8" thick
Minimum order: \$50 USD



Name: Honeycomb
Material: SBR Rubber 1/8" thick
Minimum order: \$50 USD



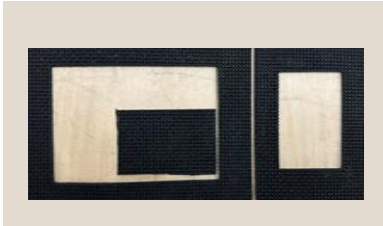
Name: Aberdeen (Microspike)
Material: SBR Rubber 1/8" thick
Minimum order: \$50 USD

Cuts can be made from a variety of other materials. If you have another application in mind, please don't hesitate to discuss it with us! We have the capabilities to do custom items to fit your needs.

We also offer a variety of colored foams with custom thicknesses or colors.

Die Cut Shapes

Material can be die cut into many different forms and used for a variety of applications.



Pressure Sensitive Adhesive (PSA) can be added to the back of the cut or full sheet to provide a strong bond to adhere to your product



Material can also be purchased as a full 35" X 52" sheet w/ PSA



The pictures above show just one application for our die cut materials.

Uses & Applications



Step Treads



Exercise Equipment



Traction Pads



Watercraft & Boat decks & steps



Non-Skid



RV steps & storage areas



Safety



Conversion & Wheelchair
Vans floors & steps

Contact Us

www.cpitx.com
(512) 295-2683

susan@cpitx.com
1098 Windy Hill Road
Kyle, TX 78640